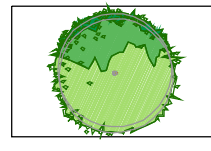
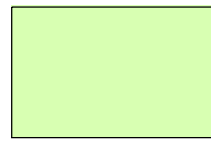
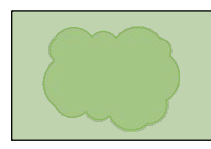
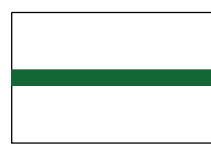
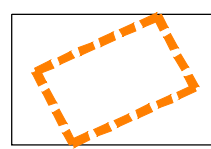
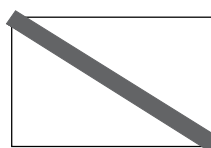
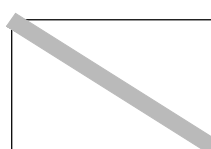
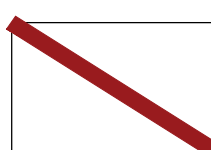
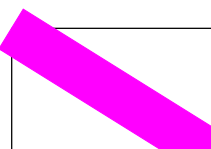
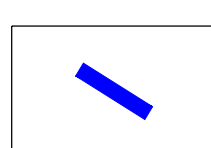



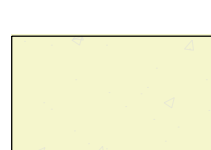

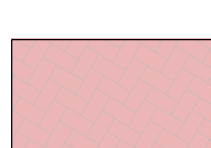
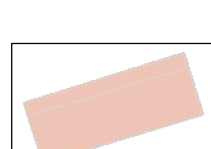
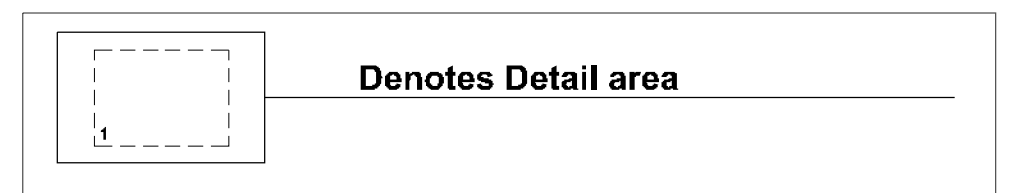


Landscape Treatments

-  **PROPOSED TREE PLANTING**
See list
-  **GRASS PLANTING**
-  **PROPOSED SHRUB PLANTING**
See list
-  **PROPOSED HEDGE PLANTING**
-  **URBAN SOIL TREE PIT**
25m²
-  **BOUNDARY TREATMENT**
Garden kerb 50x150x900mm
-  **BOUNDARY TREATMENT**
Charcoal 100x100 double row border
200mm wide
-  **BOUNDARY TREATMENT**
1200mm high Perforated railing/Glass
balustrade
-  **BOUNDARY TREATMENT**
Railway line Boundary to be retained
and 4m high noise barrier introduced.
See Landscape Rationale for details.
-  **BOUNDARY TREATMENT**
Metal Gate
-  **SURFACE TREATMENT**
Paving flag 600x400 grey (to match
existing on Main Street)
-  **SURFACE TREATMENT**
Tegula charcoal 175x140x50mm &
140x140x50mm
-  **SURFACE TREATMENT**
Sienna silver 208x173x50mm &
173x173x50mm
-  **SURFACE TREATMENT**
Beige tarmac/Dust path
-  **SURFACE TREATMENT**
Concrete path, brush finish with
trowel edge
-  **SURFACE TREATMENT**
Hydropave Pedesta for Car Parking
200x100x60 Brindle with charcoal
border (to match existing)
-  **SEATING**
Omos or similar approved



Proposed Street Tree Planting

No.	Name.	Size.
T1	Platanus acerifolia	18-20cm
T2	Tilia cordata 'Greenspire'	16-18cm
T3	Tilia cordata 'Green column'	16-18cm
T4	Acer campestre 'Elsrijk'	16-18cm
T5	Pyrus calleryana 'Chanticleer'	16-18cm
T6	Quercus palustris	16-18cm
T7	Prunus avium 'Plena'	16-18cm
T8	Sorbus aria	16-18cm

Proposed Small Tree Planting

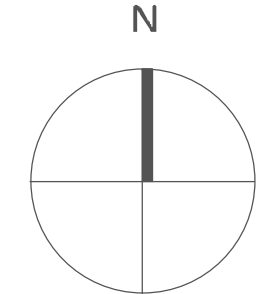
No.	Name.	Size.
T15	Acer palmatum	150cm
T16	Acer shirasawanum	200cm
T17	Acer griseum	14-16cm
T18	Amelanchier lamarckii	200cm
T19	Arbutus unedo	200cm
T20	Betula pendula	14-16cm
T21	Betula pendula(3 stem min.)	350cm
T22	Betula papyrifera	14-16cm
T23	Crinodendron hookerianum	50L
T24	Laurus nobilis 'Cone Shaped'	200cm
T25	Laurus nobilis(3 stem min.)	200cm
T26	Rhus typhina	120cm
T27	Salix tortuosa	300cm
T28	Malus 'John Downie'	14-16cm
T29	Viburnum opulus	14-16cm

Proposed Planting A

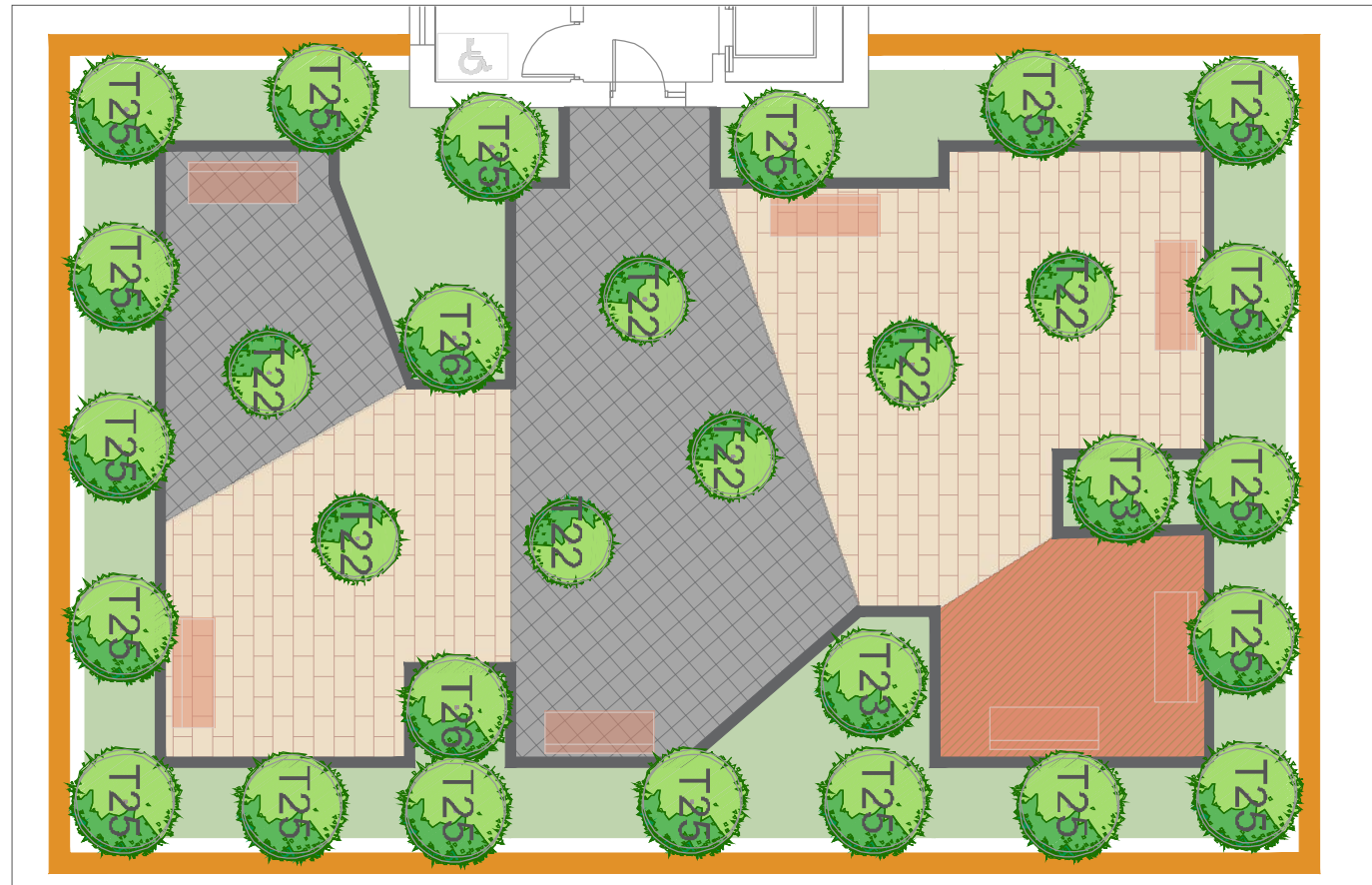
No.	Name.	Size.
H1	Elaeagnus x ebbingei	3L
S1	Lavandula angustifolia	3L
S6	Cornus alba	2L
G1	Bergenia cordifolia	1L
G4	Hedera helix Hibernica	1L
P1	Erysimum 'Bowler's mauve'	3L
P7	Verbascum spp.	1L

Proposed Planting H

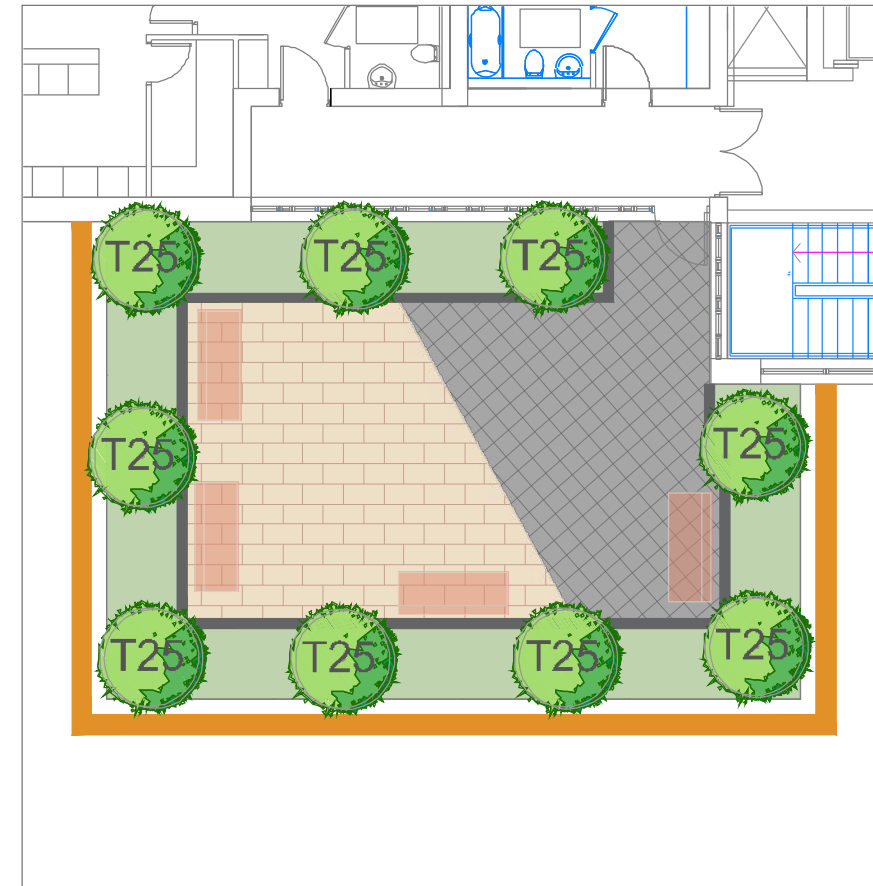
No.	Name.	Size.
H7	Sarcococca spp.	3L
S1	Lavandula angustifolia	3L
S8	Hypericum hidcote	2L
G2	Pescicaria affinis	1L
G6	Helleborus niger	1L
P12	Allium hollandicum	1L



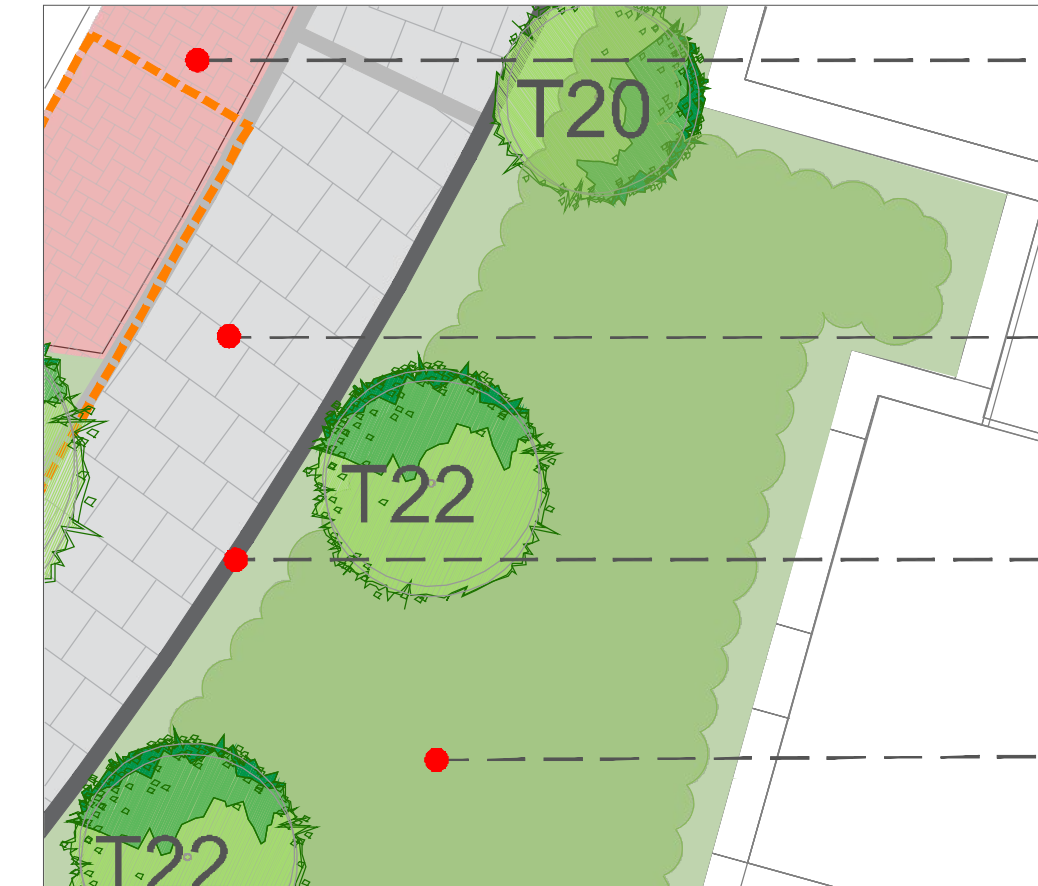
Landscape Roof Gardens Scale (1:150)



Landscape Detail Scale (1:100)



Landscape Detail Scale (1:100)



- Hydropave Pedesta for Car Parking 200x100x60 Brindle with charcoal border
- Paving flag 600x400 grey with cobble edge
- Garden kerb 50x150x900mm
- Pollinator planting

REVISIONS:			
Rev A	MR	19.10.16	Revised Layout
Rev B	MR	29.03.19	Revised Layout
Rev C	MR	09.05.19	Revised Layout
Rev D	MR	12.07.19	Revised Layout - Wind

Project Title: Proposed Block 26, Clongriffin, Dublin 13	Dwg. No.: 02
Client: Gerard Gannon Properties	Scale: @ A1 1:200
Drawing Title: Block 26 Street Level & Roof Gardens	Date: 07.08.18
Job No.: 1147 B26	Drawing By: MR
	Checked By: RMD

Ronan MacDiarmada + Associates Ltd.
Landscape Architects and Consultants.
5 Tootenhill, Rathcoole, Co. Dublin
tel: +353 1 412 4476 mob: 086 26 25 438
fax: +353 1 401 3748 e-mail: ronan@rmda.ie

This drawing is copyright ©